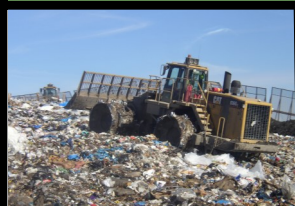


# ecology action center news



**Volume 13, Issue 3**

**Fall 2015**

## **NOW ACCEPTING Applications for the Small Business Energy Assessment Program (SBEAP)**

*By: Marcus Ricci, Assistant Director of Energy & Water Programs*

The Ecology Action Center is now accepting applications for its Small Business Energy Assessment Program (SBEAP). For the past year, the EAC has been offering Bloomington-Normal residents a home energy assessment, as well as resources to improve their home's energy conservation and efficiency, through the Home Energy Assessment Program (HEAP), part of our BN Energy Bright Program ([bnenergybright.org](http://bnenergybright.org)). The SBEAP expands our Energy Program's focus out from residences to small businesses – those that use 15,000 kilowatt-hours (kWh) of energy per year – and seeks to help business owners in Bloomington-Normal in their efforts to increase the energy conservation and efficiency of their buildings and operations. A Small Business Energy Assessment typically runs \$300; however, the City of Bloomington and the Town of Normal subsidize these energy conservation and efficiency efforts through their Electricity Aggregation Program, so the final cost to the business owner is only \$40! The SBEAP service package includes:



- **Energy Performance Analysis**—reviews up to 24 months of your electricity and natural gas utility bills and compares your consumption to local, regional, and/or national averages.
- **A Site Audit**—inspects and assesses your building's energy consumption specific to your operations, including: heating, cooling and ventilating mechanical systems; interior and exterior lighting; domestic water heating system; and electrical and natural gas plug loads. An Audit will often find leaks in windows and doors, or non-functioning mechanicals or lights.
- **Energy Consumption Reduction Measures (ECRMs)**—compiles a short list ranging from adding insulation to changing incandescent lighting to LED to cleaning and tuning or upgrading your heating and cooling systems. Many of these ECRMs have a simple payback of less than three years!
- **Additional Phases**—for a nominal charge, additional phases may include ECRM energy savings estimates – how much energy a given measure may save you annually – and/or ECRM Lifecycle Cost Analysis – how much a given measure may cost and how many years it may take for that measure to pay for itself.

To participate or discuss this program, please contact Marcus Ricci at [mricci@ecologyactioncenter.org](mailto:mricci@ecologyactioncenter.org) or at (309) 454-3169, ext. 15.

## **Mark Your Calendar**

**Oct. 7, 6:30 - 8 pm**

**Path to Zero Energy  
Workshop**

*with Normal Public Library*

**Oct. 8, 5:30 - 7 pm**

**Composting Workshop**  
*sign up online*

[ecologyactioncenter.org](http://ecologyactioncenter.org)

**Oct. 10, 9 - 10:30 am**

**Composting Workshop**  
*sign up online*

[ecologyactioncenter.org](http://ecologyactioncenter.org)

**Oct. 17, 8 am - 2 pm**

**McLean County  
Household Hazardous  
Waste Collection**

[ecologyactioncenter.org](http://ecologyactioncenter.org)

**Oct. 24, 9 - 10:30 am**

**Rain Barrel Workshop**  
*sign up online*

[ecologyactioncenter.org](http://ecologyactioncenter.org)

**Oct. 27, 6 - 7 pm**

**Homeowner's Guide to  
Radon**

[ecologyactioncenter.org](http://ecologyactioncenter.org)

*More info about all our events at:  
[ecologyactioncenter.org](http://ecologyactioncenter.org)*

## Cell Phone Drive

The Neville House will have a Cell Phone Drive during the months of October through December. Cell phones donated will be used as part of a 9-1-1 Safety Plan and/or recycled for Client Assistance funds.

### You can help!

Host a cell phone drive at your business or organization, or personally donating cell phones.

Please contact Senna Adjabeng, Director of Countering Domestic Violence at 309-834-9249 or [sennaA@mccainc.org](mailto:sennaA@mccainc.org).

## Marriott Achievements

- Over 300,000 pounds of food scraps diverted from the landfill.
- Replacement of 1000+ lightbulbs with LED lamps
- Chamber of Commerce Green Business Award.
- All office lighting on motion sensors.
- HVAC – Chiller shut down seasonally and water cooled by outside controls.
- Three EV charging stations on property
- Local food from local farms.
- Good to Go GLT winner 4 years in a row
- Manages its carbon footprint and has it available online

## October is Radon Awareness Month

*By: Ruth Ann Lipic, Radon Program Coordinator*

**How does radon work exactly?** Radon comes from the decay of uranium in the ground and moves through soil pore spaces and rock fractures near the surface of the earth, and usually escapes into the atmosphere. Where a house is present, however, soil air often flows toward its foundation for three reasons: 1) differences in air pressure between the soil and the house, 2) the presence of openings in the house's foundation, and 3) increases in permeability around the basement (if one is present).

**What is the problem with radon?** Radon, which is a form of alpha radiation, is the leading cause of lung cancer, following smoking. An estimated 1,100 deaths per year occur in Illinois from radon-induced lung cancer, and over 160,000 deaths occur nationwide.

**What can I do?** Test your home today. Take action. The only way to tell if you have radon is to **TEST**. Testing is inexpensive and easy. You can call a radon measurement professional or use one of the test kits that are sold at the Ecology Action Center for just \$10.00. It is a short-term test that you expose to basement air for 3 to 7 days. Then seal the small pre-paid envelope and send it off to be read at the laboratory. Go to the website [radonmclean.org](http://radonmclean.org) to order a test kit, or purchase one at the EAC.

**Where can I learn more?** Plan to attend a presentation at the Community Cancer Center on October 27 from 6-7 p.m. The program is free of charge, and radon test kits will be available for purchase.

## 10<sup>th</sup> Annual Sustainable Gourmet



Join us on **Thursday, November 12**, for the 10th Annual Sustainable Gourmet! This year's event will take place from **5:30-7:30 p.m. at the Uptown Normal Marriott**. Sample appetizers featuring locally-grown food, taste several varieties of organic wine, and bid on unique and interesting items at the Silent Auction, all while celebrating a year of success at the Ecology Action Center.

Since before it's opening, the Marriott has been a local leader in sustainability practices. Construction specifications included energy efficient HVAC and lighting, low-flow fixtures, and motion sensors for power savings in offices. Purchasing policies include 100% recycled/60% post-consumer paper products, LED lightbulbs, local food, and Green Seal chemicals for housekeeping. The list goes on and on. We applaud their commitment, and encourage all businesses to strive to be good stewards of the earth's resources.

Tickets are \$40 per person and will soon be available online or at the Ecology Action Center at 202 W. College Avenue Monday-Thursday, 9 a.m.-5 p.m. Tickets **must** be purchased in advance; the ticket sales deadline is November 8 or when tickets are sold out, whichever comes first. NOTE: this event has sold out the past four years in a row. Get your tickets early!

# McLean County Household Hazardous Waste Event

Saturday, October 17th

By: Michael Brown, Executive Director

On October 17, 2015, McLean County residents will have an opportunity for safe disposal of their Household Hazardous Wastes (HHW). The Ecology Action Center has again led a public-private partnership to raise funds for to cover the costs of a HHW collection; Mitsubishi Motors North America is generously providing their parking lots as a venue for the public event. Proper disposal of HHW items is crucial for the protection of local water supplies.

The October 17 HHW event will be open from 8 a.m. to 2 p.m. and is free and open **only to McLean County residents**. Per state regulations only residential HHW can be collected – no business or commercially-generated wastes may be accepted. Residents may enter the event via the main entrance at 100 N. Mitsubishi Motorway, in Normal. The event will occur rain or shine.

For an efficient event and to minimize wait times, residents are encouraged to follow these guidelines:

- **Items that will be accepted** include oil-based paints, household batteries, paint thinners, used motor oil, herbicides, drain cleaners, insecticides, lawn chemicals, pesticides, solvents, old gasoline, antifreeze, pool chemicals, hobby chemicals, cleaning products, aerosol paints and pesticides, mercury, fluorescent lamp bulbs, double-bagged and wetted asbestos, old and outdated medicines and pharmaceuticals, and electronics.
- **Items that will *not* be accepted** include latex paint, tires, agricultural chemicals, propane tanks, business/commercial sector wastes, smoke detectors, explosives, farm machinery oil, fireworks, fire extinguishers, lead acid batteries, institutional wastes, medical wastes, sharps, needles and potentially infectious medical wastes.
- **Latex paint is not hazardous** and may be disposed of in household trash once it has been completely dried to a solid. This is easily accomplished by pouring the latex paint out onto several layers of newspaper or other disposable material in an appropriate amount and letting it air dry. Once it is dry and solidified it may be safely and legally thrown in the trash. This technique is only applicable to latex paints; oil paints are always considered hazardous and should be used up for their intended purpose or disposed of at a HHW event.
- Materials should be kept in original labeled packaging and containers – **do not mix materials together**.
- To reduce excessive traffic and waiting time at the event, residents are strongly encouraged to **work with their neighbors and friends, especially in helping the elderly**, to bring HHW materials from multiple households in one vehicle.
- Materials will only be accepted during the event hours – **dumping of materials before or after the event is illegal**.

To cover the estimated \$180,000 cost of this one-day event, **the Ecology Action Center is accepting donations to the McLean County HHW Fund**. Tax deductible donations may be made online or by sending a check to: Ecology Action Center, 202 W College Ave, Normal, IL 61761.

**Volunteers are critical to the success of this event.** Please sign up to assist with event set up, take down, or traffic control and other roles. All volunteers must be 18 years old or older.

**For more information** and to see a list of our sponsors and partners, please visit our website at [www.ecologyactioncenter.org](http://www.ecologyactioncenter.org).

## America Recycles Day!



Join us at the IWU Hansen Center Parking Lot on Saturday, November 14th for America Recycles Day! Take this opportunity to assess your family's recycling – what are you already doing, and what can you do better?

In honor of this “holiday,” the EAC and Illinois Wesleyan co-host a mega recycling event. On this day only, you can bring lots of items that are regularly accepted year-round in our community, but have to be taken to many different locations. You can recycle electronics, textiles, batteries, plastic garden pots and eyeglasses at this event. You can even bring your Terracycle items! (Not sure what that is? Check our website!)

We'll give you information about where to take these items throughout the year, but for this one day, bring them all to the wonderful volunteers at IWU, and we'll even unload your car!

We appreciate the help of our partners Home Sweet Home Ministries, Springfield Electric, Midwest Fiber, and the Lions Club for their assistance with this event.

### America Recycles Day

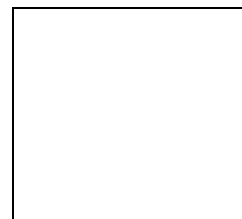
**When:** November 14, 2015

**Where:** IWU Hansen Center, Parking Lot

**Time:** TBA



Ecology Action Center  
202 W. College Ave.  
Normal, IL 61761  
ecologyactioncenter.org  
309-454-3169



Printed on Recycled, Chlorine-Free Paper, Of Course!

RETURN SERVICE REQUESTED

## EAC Staff

**Michael Brown**  
Executive Director

**Kris Hall**  
Assistant Director of  
Education

**Marcus Ricci**  
Assistant Director of  
Energy & Water Programs

**Larissa Armstrong**  
Program Assistant

**Gary Kamplain**  
Program Assistant

**Ruth Ann Lipic**  
Radon Program  
Coordinator

**Sally Stoneking**  
Administrative Assistant

**Glen Wetterow**  
Program Assistant

**Seth Rients**  
Solid Waste Technician

**Sara McCubbins**  
Expo Coordinator

**Nancy Armstrong**  
President

**Carlo Robustelli**  
Past President

**Tim Golliday**  
Vice President

**Adrienne Ohler**  
Treasurer

**Charles Bristow**  
Secretary

**Wayne Aldrich**  
Ex-officio Normal

**Steve Arney**  
Ex-officio Bloomington

**George Gordon**  
Ex-officio McLean  
County

**Myra Gordon**  
**Charlotte Brown**  
**Kari Sandhaas**  
**Laurine Brown**  
**Carl Teichman**  
**Missy Nergard**  
**Mauricio Sadicoff**  
**Mike O'Grady**  
**Amelia Buragas**



Find, friend, fan, follow, and have fun with us via social media. Find direct links at [ecologyactioncenter.org](http://ecologyactioncenter.org)